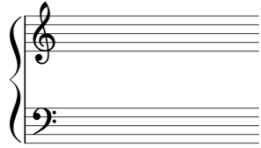


# KEY SIGNATURES

## SHARP KEY SIGNATURES

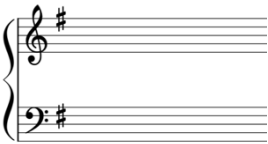
## MAJOR KEY

## MINOR KEY



C major

A minor



G major

E minor



D major

B minor



A major

F# minor



E major

C# minor



B major

G# minor



F# major

D# minor



C# major

A# minor

- TIPS:**
1. The last sharp in every sharp key signature is the Leading Note to the Tonic of its major key. Simply step up a semitone from the last sharp to find the name of the major key.
  2. The relative minor key is a minor 3<sup>rd</sup>, or three semitones, below its relative major.

